

# Room Planning—Sleeping Area and Bath Facilities

Text, Pages 129–147

Name \_\_\_\_\_

Course \_\_\_\_\_ Date \_\_\_\_\_ Score \_\_\_\_\_

## Part I: Multiple Choice

Select the best answer and write the corresponding letter in the space provided.

1. Approximately \_\_\_\_\_ of the house is devoted to the sleeping area, which includes bedrooms, baths, dressing rooms, and nurseries. 1. \_\_\_\_\_  
A. 1/2  
B. 1/4  
C. 1/3  
D. 3/4
2. The \_\_\_\_\_ normally determines the number of bedrooms a house will have. 2. \_\_\_\_\_  
A. size of the family  
B. size of the neighborhood  
C. number of guests  
D. None of the above.
3. Generally, \_\_\_\_\_ homes have the most sales potential. 3. \_\_\_\_\_  
A. one-bedroom  
B. two-bedroom  
C. three-bedroom  
D. four-bedroom
4. In a split bedroom plan, the \_\_\_\_\_ is separated from the remaining bedrooms for additional privacy. 4. \_\_\_\_\_  
A. smallest bedroom  
B. nursery  
C. guest bedroom  
D. master bedroom
5. The Federal Housing Administration recommends that the minimum size for a bedroom should be \_\_\_\_\_ square feet. 5. \_\_\_\_\_  
A. 50  
B. 100  
C. 150  
D. 200

6. When designing bedroom space for the disabled, a clear space of \_\_\_\_\_ square is usually required for turning a wheelchair in front of a closet. \_\_\_\_\_
- A. 3'
  - B. 5'
  - C. 7'
  - D. 9'
7. The minimum bedroom closet depth is \_\_\_\_\_. \_\_\_\_\_
- A. 16"
  - B. 20"
  - C. 24"
  - D. 28"
8. The most desirable location for a closet is \_\_\_\_\_. \_\_\_\_\_
- A. on an outside wall
  - B. in the hall near the bedroom
  - C. near the bedroom entrance
  - D. None of the above.
9. Bifold, \_\_\_\_\_, or sliding closet doors generally allow for partial entry by wheelchair users. \_\_\_\_\_
- A. split
  - B. ribbon
  - C. 1/2
  - D. accordion
10. An ideal bedroom will have windows \_\_\_\_\_. \_\_\_\_\_
- A. on two walls
  - B. on one wall
  - C. low on the wall
  - D. evenly spaced on the walls
11. Bedroom doors should be \_\_\_\_\_ wide to accommodate a wheelchair. \_\_\_\_\_
- A. 2'-6"
  - B. 2'-8"
  - C. 2'-10"
  - D. 3'-0"
12. The best location for a bedroom door is \_\_\_\_\_. \_\_\_\_\_
- A. on a long wall
  - B. near a corner
  - C. in the center of a wall
  - D. on an exterior wall

Name \_\_\_\_\_

## Part II: Completion

Complete each sentence with the proper response. Place your answer on the space provided.

1. Two-story and split-level house designs require at least \_\_\_\_\_ baths. 1. \_\_\_\_\_
2. A water closet and lavatory comprise a \_\_\_\_\_ bath. 2. \_\_\_\_\_
3. A water closet, lavatory, and shower generally comprise a \_\_\_\_\_ bath. 3. \_\_\_\_\_
4. A minimum size bath is \_\_\_\_\_ by 8'. 4. \_\_\_\_\_
5. If a bidet is included in the design of a home, it is often installed in the \_\_\_\_\_ bath. 5. \_\_\_\_\_
6. A well-lighted \_\_\_\_\_ should be placed above the bathroom lavatory. 6. \_\_\_\_\_
7. Provide space at least \_\_\_\_\_ wide for a water closet. 7. \_\_\_\_\_
8. The most popular size for a bathtub is \_\_\_\_\_. 8. \_\_\_\_\_
9. Prefabricated shower stalls are available in metal, \_\_\_\_\_, and plastic. 9. \_\_\_\_\_
10. More luxurious showers are usually made of \_\_\_\_\_, terrazzo, or marble. 10. \_\_\_\_\_
11. Bathroom storage and countertop space can be provided by installing sink cabinets or \_\_\_\_\_. 11. \_\_\_\_\_
12. In larger baths, some \_\_\_\_\_ may be used as a whirlpool or a bathtub. 12. \_\_\_\_\_
13. If an exhaust fan is used in a bath, it should be located near the tub and \_\_\_\_\_ area. 13. \_\_\_\_\_
14. Electrical switches in a bath should be placed out of reach from the \_\_\_\_\_. 14. \_\_\_\_\_
15. \_\_\_\_\_ receptacles installed in bathrooms are fast-acting devices that detect short circuits and immediately shut off power to the receptacle. 15. \_\_\_\_\_
16. Bathroom doors are generally 2'-6" or 2'-4" in width, but need to be at least \_\_\_\_\_ wide for wheelchair access. 16. \_\_\_\_\_

### Part III: Short Answer/Listing

Provide brief answers to the following questions.

1. List the steps in planning the furniture arrangement of a bedroom using a CADD system.

---

---

---

---

2. Name three reasons why the decor of a bathroom should be well-planned. \_\_\_\_\_

---

---

---

3. Name three planning considerations to make in order to provide safety in the bath. \_\_\_\_\_

---

---

---

4. In addition to the normal activities carried out in the bathroom, list two others a larger bath might accommodate. \_\_\_\_\_

---

5. Name three basic areas of a home. \_\_\_\_\_

---

---

6. What is the recommended distance from the rim of the bathroom sink to the floor for wheelchair armrests? \_\_\_\_\_

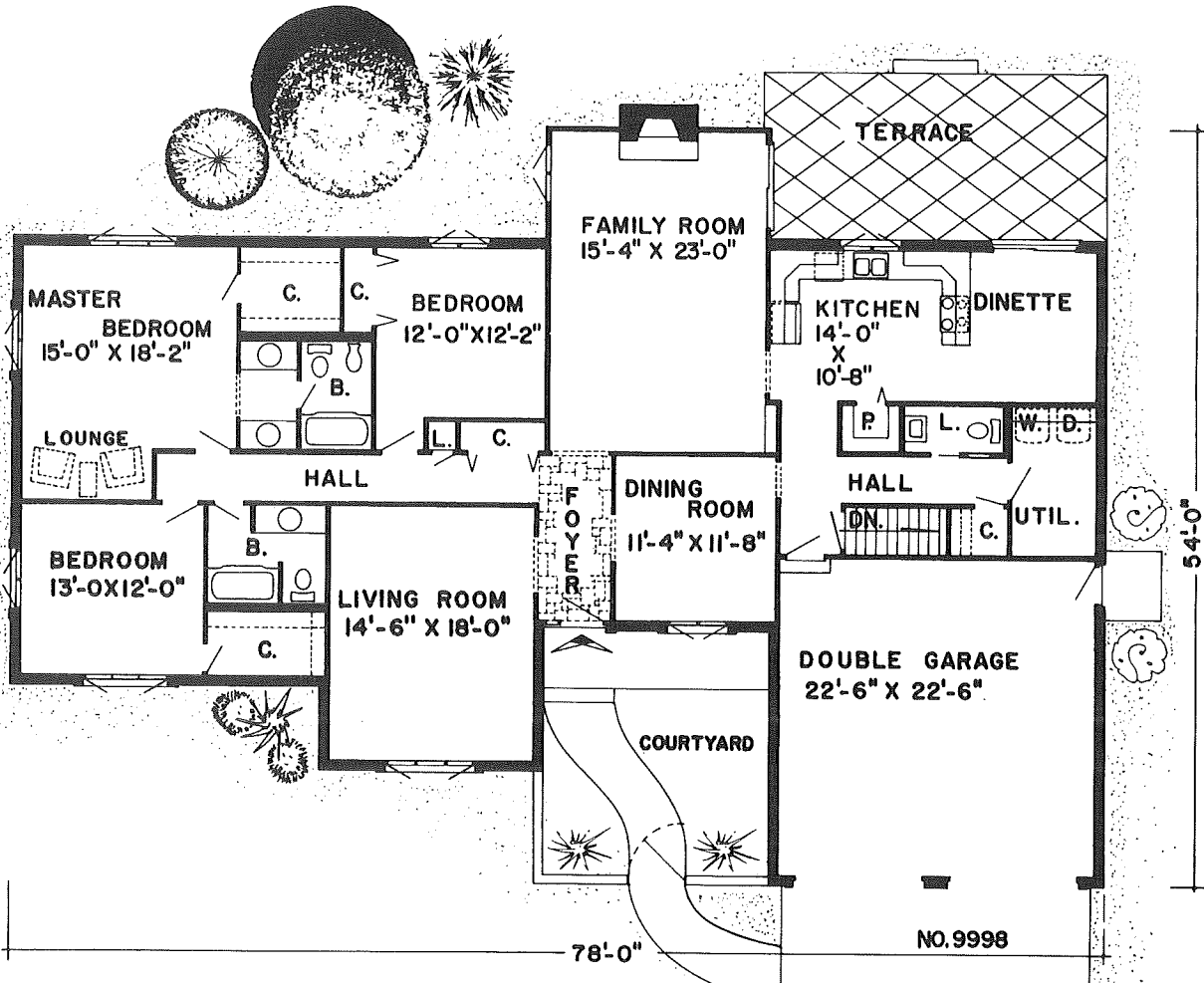
7. What is the recommended height of a water closet seat for wheelchair users? \_\_\_\_\_
-

# Part IV: Problems/Activities

1.

Directions:

Using colored pencils, crayons, felt-tipped pens, or adhesive-backed (semitransparent) overlays, shade each of the three basic areas of the house using three colors. Include a legend for clarity.



BASIC AREAS

NAME:

7-1