

NOCTI QUESTIONS

1. WHERE IS THIRD ANGLE PROJECT COMMONLY USED?
 - A. GERMANY
 - B. USA
 - C. CHINA
 - D. JAPAN

2. What type of pictorial drawing shows a circle in the front plane as a true circle?
 - A. One point perspective
 - B. Isometric
 - C. Two point perspective
 - D. Oblique

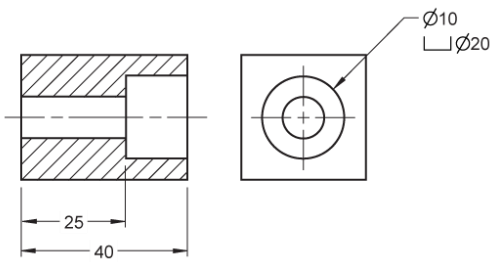
3. If two lines make congruent or adjacent lines they are.....
 - A. Tangent
 - B. Parallel
 - C. Perpendicular
 - D. Straight

4. Which is the formula for volume of a cylinder?
 - A. $V = \pi r^2$
 - B. $V = \pi r^2 h$
 - C. $V = 2\pi r$
 - D. $V = C\pi r^2$

5. ANSI stands for what organization?
 - A. American National Standards Institute
 - B. American National Systems Institute
 - C. American Number Standard Institute
 - D. Associate National Standards Institute

6. What does 10.4 millimeters, 54.7 centimeters and 4.06 meters equal?
 - A. 461.74m
 - B. 69.16m
 - C. 4.6174m
 - D. 6.916m

7. This is a diagram for a :

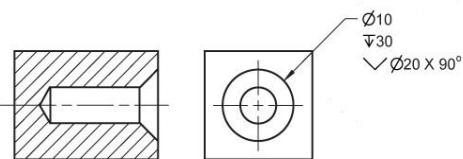


- A. Countersunk Hole
- B. Counter bore Hole
- C. Double neck shaft
- D. Cut Section

8. Which symbol means relative in location of one object to another?

- A.
- B.
- C.
- D.

9. This is a diagram for a :



- A. Countersunk Hole
- B. Counter bore Hole
- C. Tapered neck shaft
- D. Cut Section

10. What does the following symbol mean?

- A. Circularity
- B. Flatness
- C. Concentricity
- D. Position

11. Which is the formula for circumference?

- A. $C = \pi r^2$
- B. $C = \pi d^2$
- C. $C = hr^2$
- D. $C = v\pi r^2$